



Test Report

No.: GZ1105061075/CHEM

Date: MAY 20, 2011

Page 1 of 12

HENKEL HUAWEI ELECTRONICS CO.,LTD.
SONGTIAO INDUSTRIAL PARK, LIANYUNGUANG, JIANGSU, CHINA

The following sample(s) was/were submitted and identified on behalf of the applicant as
Epoxy Moulding Compounds

SGS Job No. : SZ13131096
Tested sample information : KL-1000-3H
Tested sample information : KL-1000-3, KL-1000-3LX, KL-1000-5, KL-1000-F, KL-1000-FC, KL-1000-FF,
KL-1000-FH, KL-1000-FX
Date of Sample Received : MAY 16, 2011
Testing Period : MAY 16, 2011 TO MAY 20, 2011
Test Requested :A&B: Selected test (s) with reference to EU COM(2008) 809/final as
requested by client.
C~F: Selected test (s) as requested by client.
Test Method : Please refer to next page(s).
Test Result(s) : Please refer to next page(s).
Conclusion : A: Based on the performed tests on submitted sample(s), the results **comply**
with the RoHS Directive 2002/95/EC and its subsequent amendments.

Signed for and on behalf of
SGS-CSTC Ltd.

Manson Yang
Approved Signatory

This document is issued by the Company under its General Conditions of Service printed overleaf or available on request and accessible at http://www.sgs.com/terms_and_conditions.htm. Attention is drawn to the limitation of liability, indemnification and jurisdiction issues defined therein. Any holder of this document is advised that information contained hereon reflects the Company's findings at the time of its intervention only and within the limits of Client's instructions, if any. The Company's sole responsibility is to its Client and this document does not generate parties to a transaction from exercising all their rights and obligations under the transaction documents. Any unauthorized alteration, forgery or falsification of the content or appearance of this document is unlawful and offenders may be prosecuted to the fullest extent of the law.
Unless otherwise stated the results shown in this test report refer only to the sample(s) tested. This document cannot be reproduced except in full, without prior approval of the Company.



SGS - Standards Technical Services Co., Ltd
Guangzhou Testing Services Center/Chemical Laboratory

198 Kazhu Road, Sointech Park, Guangzhou Economic & Technology Development District, Guangzhou, China 510663 | (86-20) 82155555 | (86-20) 82075125 | www.cn.sgs.com
中国·广州·经济技术开发区科学城科珠路198号 邮编: 510663 | (86-20) 82155555 | (86-20) 82075125 | sgs.china@sgs.com

Member of the SGS Group (SGS SA)

Test Results:

Description for specimen 1 : Black plastic particle

A: RoHS Directive 2002/95/EC

| Test Item(s) | Unit | Test Method (Reference) | Result | MDL | Limit |
|---|-------|--------------------------|--------|-----|-------|
| Cadmium (Cd) | mg/kg | IEC 62321: 2008, ICP-OES | N.D. | 2 | 100 |
| Lead (Pb) | mg/kg | IEC 62321: 2008, ICP-OES | 7 | 2 | 1000 |
| Mercury (Hg) | mg/kg | IEC 62321: 2008, ICP-OES | N.D. | 2 | 1000 |
| Hexavalent Chromium (CrVI) by alkaline extraction | mg/kg | IEC 62321: 2008, UV-Vis | N.D. | 2 | 1000 |
| Sum of PBBs | mg/kg | - | N.D. | - | 1000 |
| Monobromobiphenyl | mg/kg | IEC 62321: 2008, GC-MS | N.D. | 5 | |
| Dibromobiphenyl | mg/kg | IEC 62321: 2008, GC-MS | N.D. | 5 | |
| Tribromobiphenyl | mg/kg | IEC 62321: 2008, GC-MS | N.D. | 5 | |
| Tetrabromobiphenyl | mg/kg | IEC 62321: 2008, GC-MS | N.D. | 5 | |
| Pentabromobiphenyl | mg/kg | IEC 62321: 2008, GC-MS | N.D. | 5 | |
| Hexabromobiphenyl | mg/kg | IEC 62321: 2008, GC-MS | N.D. | 5 | |
| Heptabromobiphenyl | mg/kg | IEC 62321: 2008, GC-MS | N.D. | 5 | |
| Octabromobiphenyl | mg/kg | IEC 62321: 2008, GC-MS | N.D. | 5 | |
| Nonabromobiphenyl | mg/kg | IEC 62321: 2008, GC-MS | N.D. | 5 | |
| Decabromobiphenyl | mg/kg | IEC 62321: 2008, GC-MS | N.D. | 5 | |
| Sum of PBDEs | mg/kg | - | N.D. | - | 1000 |
| Monobromodiphenyl ether | mg/kg | IEC 62321: 2008, GC-MS | N.D. | 5 | |
| Dibromodiphenyl ether | mg/kg | IEC 62321: 2008, GC-MS | N.D. | 5 | |
| Tribromodiphenyl ether | mg/kg | IEC 62321: 2008, GC-MS | N.D. | 5 | |
| Tetrabromodiphenyl ether | mg/kg | IEC 62321: 2008, GC-MS | N.D. | 5 | |
| Pentabromodiphenyl ether | mg/kg | IEC 62321: 2008, GC-MS | N.D. | 5 | |
| Hexabromodiphenyl ether | mg/kg | IEC 62321: 2008, GC-MS | N.D. | 5 | |
| Heptabromodiphenyl ether | mg/kg | IEC 62321: 2008, GC-MS | N.D. | 5 | |
| Octabromodiphenyl ether | mg/kg | IEC 62321: 2008, GC-MS | N.D. | 5 | |
| Nonabromodiphenyl ether | mg/kg | IEC 62321: 2008, GC-MS | N.D. | 5 | |
| Decabromodiphenyl ether | mg/kg | IEC 62321: 2008, GC-MS | N.D. | 5 | |

Note:

1. mg/kg = ppm
2. N.D. = Not Detected (< MDL)
3. MDL = Method Detection Limit
4. "-" = Not regulated

This document is issued by the Company under its General Conditions of Service printed overleaf or available on request and accessible at http://www.sgs.com/terms_and_conditions.htm. Attention is drawn to the limitation of liability, indemnification and jurisdiction issues defined therein. Any holder of this document is advised that information contained hereon reflects the Company's findings at the time of its intervention only and within the limits of Client's instructions, if any. The Company's sole responsibility is to its Client and this document does not generate parties to a transaction from exercising all their rights and obligations under the transaction documents. Any unauthorized alteration, forgery or falsification of the content or appearance of this document is unlawful and offenders may be prosecuted to the fullest extent of the law. Unless otherwise stated, the results shown in this test report refer only to the sample(s) tested. This document cannot be reproduced except in full, without prior approval of the Company.



B: HBCDD & Phthalate(s)

| Test Item(s) | Unit | Test Method (Reference) | Result | MDL |
|------------------------------------|--------|-------------------------|--------|-------|
| Hexabromocyclododecane (HBCDD) | mg/kg | EPA 3550C: 2007, GC-MS | N.D. | 10 |
| Dibutyl Phthalate (DBP) | %(w/w) | EN14372: 2004, GC-MS | N.D. | 0.003 |
| Benzylbutyl Phthalate (BBP) | %(w/w) | EN14372: 2004, GC-MS | N.D. | 0.003 |
| Di-(2-ethylhexyl) Phthalate (DEHP) | %(w/w) | EN14372: 2004, GC-MS | N.D. | 0.003 |

Note :

1. mg/kg = ppm, 0.1% = 1000ppm
2. N.D. = Not detected (< MDL)
3. MDL= Method Detection Limit

C: PAHs (Polynuclear Aromatic Hydrocarbons)

| Test Item(s) | Unit | Test Method | Results | MDL |
|--------------------------------|-------|--------------------|---------|-----|
| Naphthalene (NAP) | mg/kg | ZEK 01.2-08, GC-MS | N.D. | 0.2 |
| Acenaphthylene (ANY) | mg/kg | ZEK 01.2-08, GC-MS | N.D. | 0.2 |
| Acenaphthene (ANA) | mg/kg | ZEK 01.2-08, GC-MS | N.D. | 0.2 |
| Fluorene (FLU) | mg/kg | ZEK 01.2-08, GC-MS | N.D. | 0.2 |
| Phenanthrene (PHE) | mg/kg | ZEK 01.2-08, GC-MS | 1.0 | 0.2 |
| Anthracene (ANT) | mg/kg | ZEK 01.2-08, GC-MS | N.D. | 0.2 |
| Fluoranthene (FLT) | mg/kg | ZEK 01.2-08, GC-MS | 4.4 | 0.2 |
| Pyrene (PYR) | mg/kg | ZEK 01.2-08, GC-MS | 0.7 | 0.2 |
| Benzo(a)anthracene (BaA) | mg/kg | ZEK 01.2-08, GC-MS | N.D. | 0.2 |
| Chrysene (CHR) | mg/kg | ZEK 01.2-08, GC-MS | N.D. | 0.2 |
| Benzo(b)fluoranthene (BbF) | mg/kg | ZEK 01.2-08, GC-MS | N.D. | 0.2 |
| Benzo(k)fluoranthene (BkF) | mg/kg | ZEK 01.2-08, GC-MS | N.D. | 0.2 |
| Benzo(a)pyrene (BaP) | mg/kg | ZEK 01.2-08, GC-MS | N.D. | 0.2 |
| Indeno(1-,2,3-c,d)pyrene (IPY) | mg/kg | ZEK 01.2-08, GC-MS | N.D. | 0.2 |
| Dibenzo(a,h)anthracene (DBA) | mg/kg | ZEK 01.2-08, GC-MS | N.D. | 0.2 |
| Benzo(g,h,i)perylene (BPE) | mg/kg | ZEK 01.2-08, GC-MS | N.D. | 0.2 |
| Sum of 16 PAHs acc. US EPA | mg/kg | - | 6.1 | - |

Note:

1. mg/kg = ppm
2. N.D. = Not Detected (< MDL)
3. MDL = Method Detection Limit

This document is issued by the Company under its General Conditions of Service printed overleaf or available on request and accessible at http://www.sgs.com/terms_and_conditions.htm. Attention is drawn to the limitation of liability, indemnification and jurisdiction issues defined therein. Any holder of this document is advised that information contained hereon reflects the Company's findings at the time of its intervention only and within the limits of Client's instructions, if any. The Company's sole responsibility is to its Client and this document does not generate parties to a transaction from exercising all their rights and obligations under the transaction documents. Any unauthorized alteration, forgery or falsification of the content or appearance of this document is unlawful and offenders may be prosecuted to the fullest extent of the law. Unless otherwise stated, the results shown in this test report refer only to the sample(s) tested. This document cannot be reproduced except in full, without prior approval of the Company.



ZEK 01.2-08 : Restraining maximum values for products

| Parameter | Category 1 | Category 2 | Category 3 |
|----------------------------------|--|--|--|
| | Material indented to be put in the mouth or material for toys with normal skin contact for children aged < 36 months | Materials those are not included in Category 1, with predictable contact with the skin longer than 30 s. (long-term skin contact). | Materials those are not included in Category 1 or 2, with predictable skin contact up to 30 s (short-term skin contact). |
| Benzo[a]pyrene (mg/kg) | <MDL (<0.2)*** | 1 | 20 |
| Sum of 16 PAH (US EPA) (mg/kg)** | <MDL (<0.2)*** | 10 | 200 |

Remark:

**= Only PAH substances >0.2 mg/kg are taken into account while calculating the sum of PAHs

*** = In case that the maximum values exceed the limits of category 1, but are within the limits of category 2, one may confirm the suitability of the tested material which indented to be put in the mouth by additional specific migration tests of PAH components based on DIN EN 1186ff and §64 LFGB 80.30-1. The conclusion of the migration test results must be made based on food law criteria.

D: PFOA & PFOS (Perfluorooctanoic acid & Perfluorooctane sulfonates)

| Test Item(s) | Unit | Test Method (Reference) | Result | MDL |
|-----------------------------------|-------|-------------------------|--------|-----|
| Perfluorooctanoic acid (PFOA) | mg/kg | EPA 3550C: 2007, LC-MS | N.D. | 10 |
| Perfluorooctane sulfonates (PFOS) | | | | |
| PFOS – Acid | mg/kg | EPA 3550C: 2007, LC-MS | N.D. | 10 |
| PFOS – Metal Salt | | | | |
| PFOS – Amide | | | | |

Note:

- 1. mg/kg = ppm
- 2. N.D. = Not Detected (< MDL)
- 3. MDL = Method Detection Limit

For reference: commission regulation (EU) No 757/2010 amending regulation (EC) No 850/2004:

(1) For the purposes of this entry, Article 4(1) (b) shall apply to concentrations of PFOS equal to or below 10 mg/kg (0,001 % by weight) when it occurs in substances or in preparations.

(2) For the purposes of this entry, Article 4(1) (b) shall apply to concentrations of PFOS in semi-finished products or articles, or parts thereof, if the concentration of PFOS is lower than 0,1 % by weight calculated with reference to the mass of structurally or micro-structurally distinct parts that contain PFOS or, for textiles or other coated materials, if the amount of PFOS is lower than 1µg /m² of the coated material.

This document is issued by the Company under its General Conditions of Service printed overleaf or available on request and accessible at http://www.sgs.com/terms_and_conditions.htm. Attention is drawn to the limitation of liability, indemnification and jurisdiction issues defined therein. Any holder of this document is advised that information contained hereon reflects the Company's findings at the time of its intervention only and within the limits of Client's instructions, if any. The Company's sole responsibility is to its Client and this document does not generate parties to a transaction from exercising all their rights and obligations under the transaction documents. Any unauthorized alteration, forgery or falsification of the content or appearance of this document is unlawful and offenders may be prosecuted to the fullest extent of the law. Unless otherwise stated, the results shown in this test report refer only to the sample(s) tested. This document cannot be reproduced except in full, without prior approval of the Company.



E: TBBP-A (Tetrabromobisphenol A)

| Test Item(s) | Unit | Test Method (Reference) | Result | MDL |
|--------------------------------|-------|--------------------------------|--------|-----|
| Tetrabromobisphenol A (TBBP-A) | mg/kg | EPA 3550C: 2007, GC-MS&HPLC-MS | N.D. | 10 |

Note:

1. mg/kg = ppm
2. N.D. = Not Detected (< MDL)
3. MDL = Method Detection Limit

F: Phthalate(s)

| Test Item(s) | Unit | Test Method (Reference) | Result | MDL |
|-----------------------------|--------|-------------------------|--------|-------|
| Diisobutyl Phthalate (DIBP) | %(w/w) | EN14372: 2004, GC-MS | N.D. | 0.003 |
| Diisononyl Phthalate (DINP) | %(w/w) | EN14372: 2004, GC-MS | N.D. | 0.01 |
| Di-n-octyl Phthalate (DNOP) | %(w/w) | EN14372: 2004, GC-MS | N.D. | 0.003 |
| Diisodecyl Phthalate (DIDP) | %(w/w) | EN14372: 2004, GC-MS | N.D. | 0.01 |
| Di-n-hexyl phthalate (DnHP) | %(w/w) | EN14372: 2004, GC-MS | N.D. | 0.003 |
| Dimethyl Phthalate (DMP) | %(w/w) | EN14372: 2004, GC-MS | N.D. | 0.003 |
| Diethyl Phthalate (DEP) | %(w/w) | EN14372: 2004, GC-MS | N.D. | 0.003 |

Note :

1. mg/kg = ppm, 0.1% = 1000ppm
2. N.D. = Not detected (< MDL)
3. MDL= Method Detection Limit

For reference:

Entry 51/52 of Regulation (EC) No 552/2009 amending Annex XVII of REACH Regulation (EC) No 1907/2006 (previously restricted under Directive 2005/84/EC):

For DBP, BBP, DEHP

(1) Shall not be used as substances or in mixtures, in concentrations greater than 0,1% by weight of the plasticised material, in toys and childcare articles.

(2) Toys and childcare articles containing these phthalates in a concentration greater than 0,1% by weight of the plasticised material shall not be placed on the market.

For DINP, DNOP, DIDP

(1) Shall not be used as substances or in mixtures, in concentrations greater than 0,1% by weight of the plasticised material, in toys and childcare articles which can be placed in the mouth by children.

(2) Such toys and childcare articles containing these phthalates in a concentration greater than 0,1% by weight of the plasticised material shall not be placed on the market.

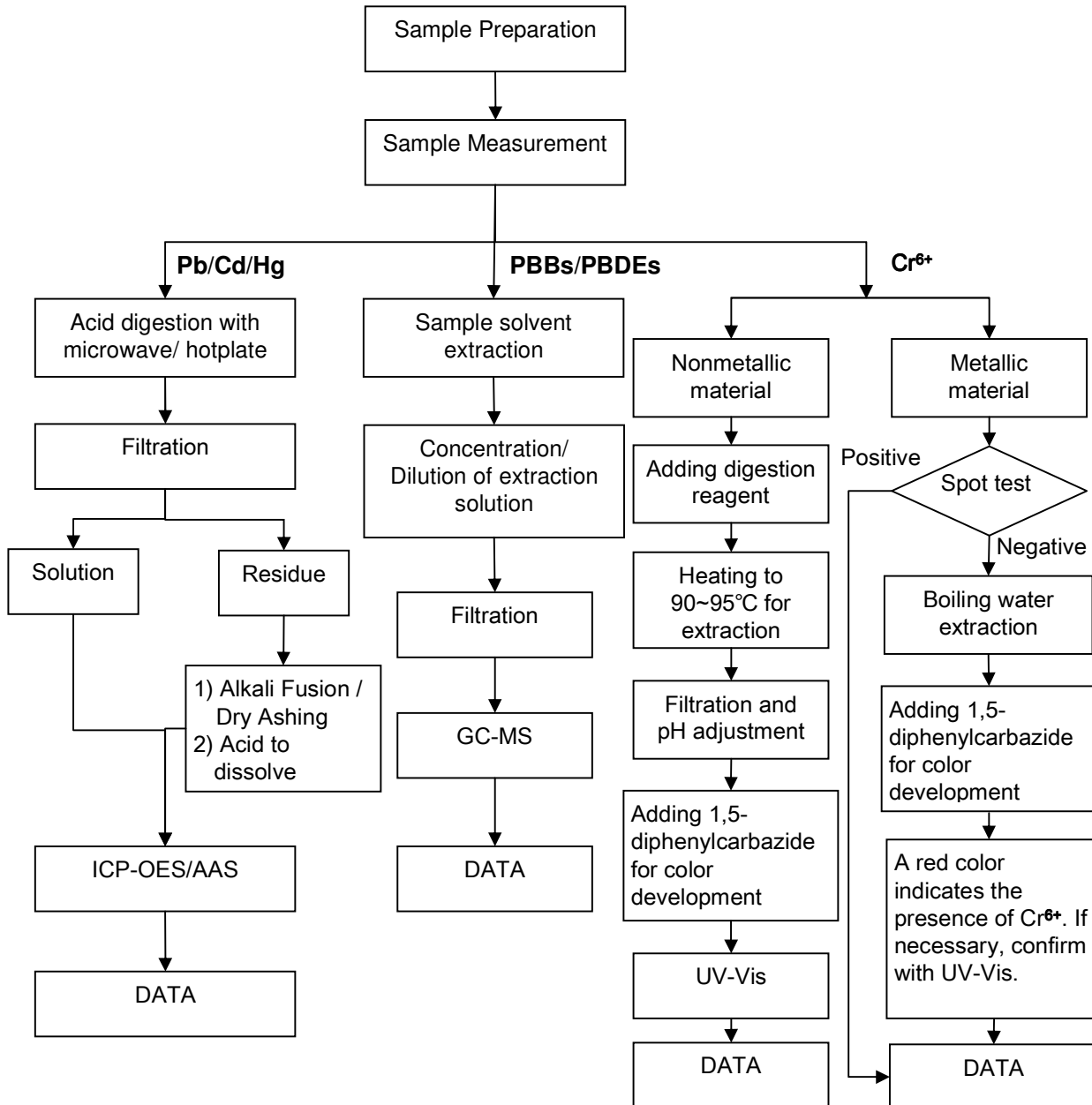
This document is issued by the Company under its General Conditions of Service printed overleaf or available on request and accessible at http://www.sgs.com/terms_and_conditions.htm. Attention is drawn to the limitation of liability, indemnification and jurisdiction issues defined therein. Any holder of this document is advised that information contained hereon reflects the Company's findings at the time of its intervention only and within the limits of Client's instructions, if any. The Company's sole responsibility is to its Client and this document does not generate parties to a transaction from exercising all their rights and obligations under the transaction documents. Any unauthorized alteration, forgery or falsification of the content or appearance of this document is unlawful and offenders may be prosecuted to the fullest extent of the law. Unless otherwise stated, the results shown in this test report refer only to the sample(s) tested. This document cannot be reproduced except in full, without prior approval of the Company.



ATTACHMENTS

RoHS Testing Flow Chart

- 1) Name of the person who made testing: Bella Wang / Cutey Yu / Ross Zhan
- 2) Name of the person in charge of testing: Adams Yu / Ryan Yang
- 3) These samples were dissolved totally by pre-conditioning method according to below flow chart (Cr⁶⁺ and PBBs/PBDEs test method excluded).



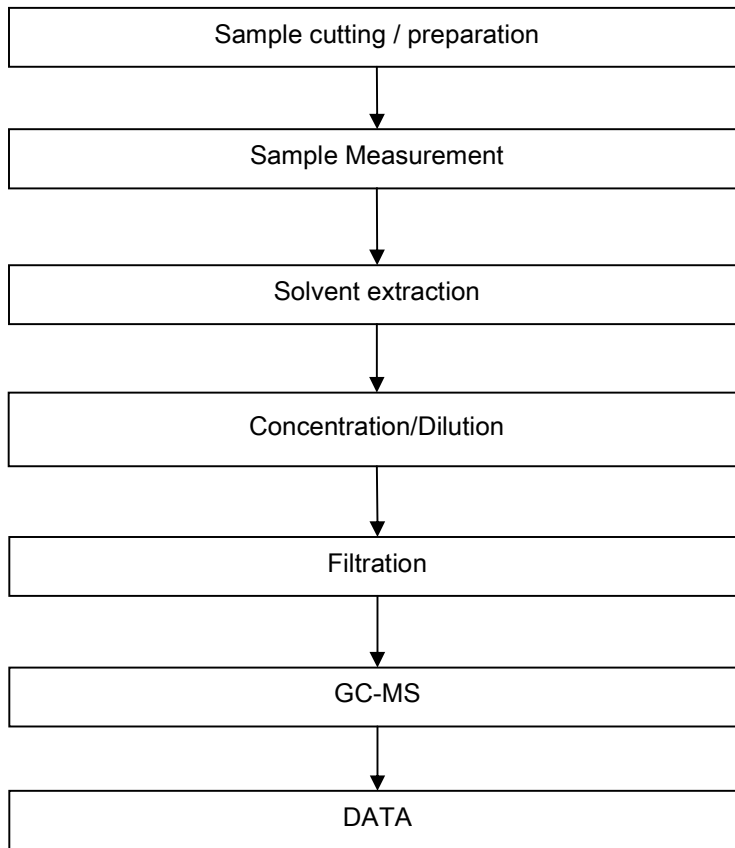
This document is issued by the Company under its General Conditions of Service printed overleaf or available on request and accessible at http://www.sgs.com/terms_and_conditions.htm. Attention is drawn to the limitation of liability, indemnification and jurisdiction issues defined therein. Any holder of this document is advised that information contained hereon reflects the Company's findings at the time of its intervention only and within the limits of Client's instructions, if any. The Company's sole responsibility is to its Client and this document does not generate parties to a transaction from exercising all their rights and obligations under the transaction documents. Any unauthorized alteration, forgery or falsification of the content or appearance of this document is unlawful and offenders may be prosecuted to the fullest extent of the law. Unless otherwise stated, the results shown in this test report refer only to the sample(s) tested. This document cannot be reproduced except in full, without prior approval of the Company.



ATTACHMENTS

HBCDD Testing Flow Chart

- 1) Name of the person who made testing: Cutey Yu
- 2) Name of the person in charge of testing: Ryan Yang



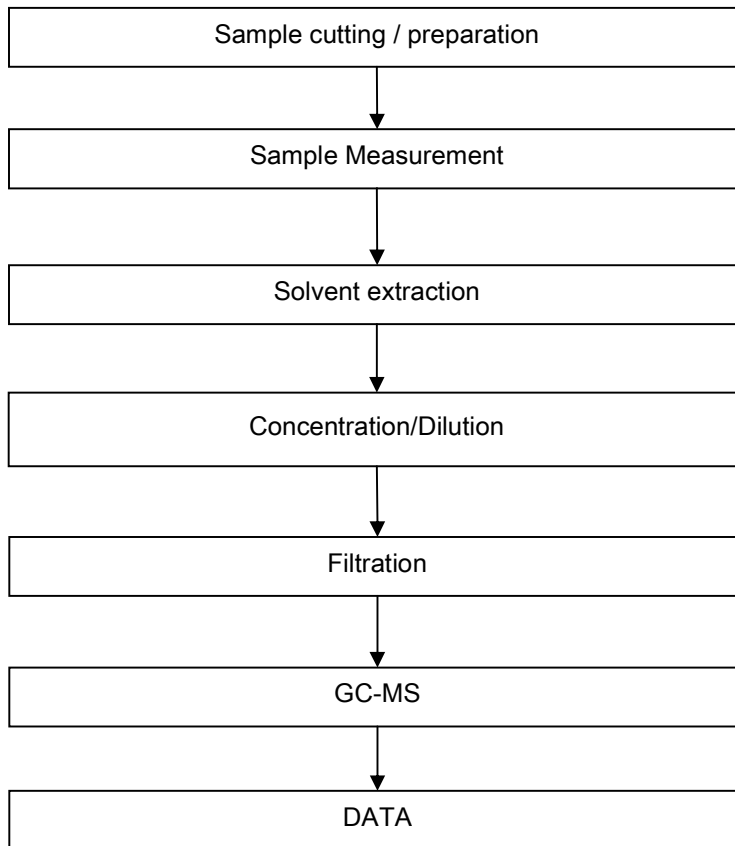
This document is issued by the Company under its General Conditions of Service printed overleaf or available on request and accessible at http://www.sgs.com/terms_and_conditions.htm. Attention is drawn to the limitation of liability, indemnification and jurisdiction issues defined therein. Any holder of this document is advised that information contained hereon reflects the Company's findings at the time of its intervention only and within the limits of Client's instructions, if any. The Company's sole responsibility is to its Client and this document does not generate parties to a transaction from exercising all their rights and obligations under the transaction documents. Any unauthorized alteration, forgery or falsification of the content or appearance of this document is unlawful and offenders may be prosecuted to the fullest extent of the law.



ATTACHMENTS

Phthalates Testing Flow Chart

- 1) Name of the person who made testing: Tina Zhao
- 2) Name of the person in charge of testing: Ryan Yang



This document is issued by the Company under its General Conditions of Service printed overleaf or available on request and accessible at http://www.sgs.com/terms_and_conditions.htm. Attention is drawn to the limitation of liability, indemnification and jurisdiction issues defined therein. Any holder of this document is advised that information contained hereon reflects the Company's findings at the time of its intervention only and within the limits of Client's instructions, if any. The Company's sole responsibility is to its Client and this document does not generate parties to a transaction from exercising all their rights and obligations under the transaction documents. Any unauthorized alteration, forgery or falsification of the content or appearance of this document is unlawful and offenders may be prosecuted to the fullest extent of the law.

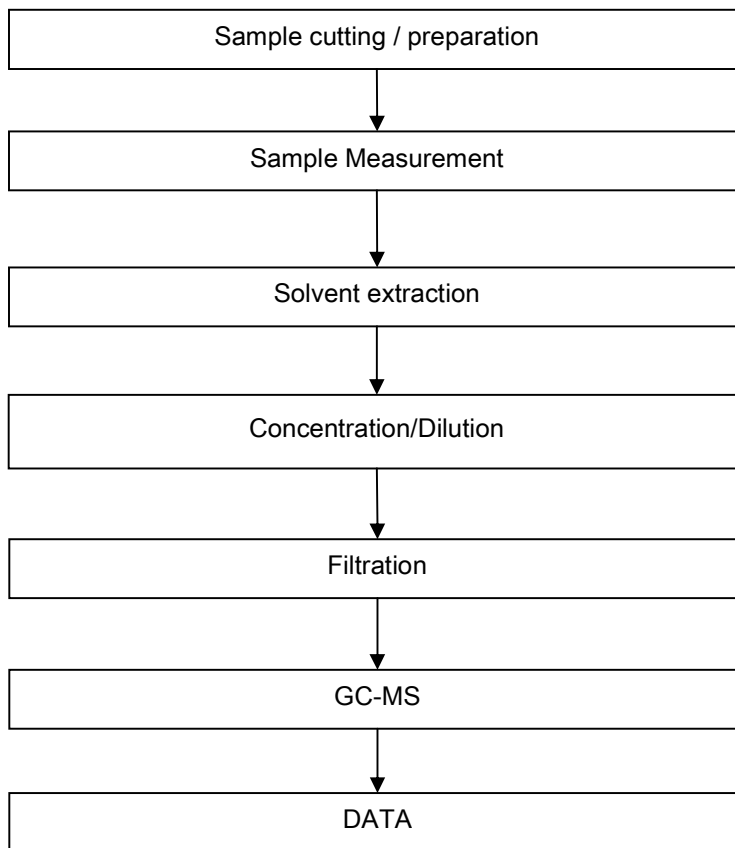
Unless otherwise stated, the results shown in this test report refer only to the sample(s) tested. This document cannot be reproduced except in full, without prior approval of the Company.



ATTACHMENTS

PAHs Testing Flow Chart

- 1) Name of the person who made testing: Cutey Yu
- 2) Name of the person in charge of testing: Ryan Yang



This document is issued by the Company under its General Conditions of Service printed overleaf or available on request and accessible at http://www.sgs.com/terms_and_conditions.htm. Attention is drawn to the limitation of liability, indemnification and jurisdiction issues defined therein. Any holder of this document is advised that information contained hereon reflects the Company's findings at the time of its intervention only and within the limits of Client's instructions, if any. The Company's sole responsibility is to its Client and this document does not generate parties to a transaction from exercising all their rights and obligations under the transaction documents. Any unauthorized alteration, forgery or falsification of the content or appearance of this document is unlawful and offenders may be prosecuted to the fullest extent of the law.

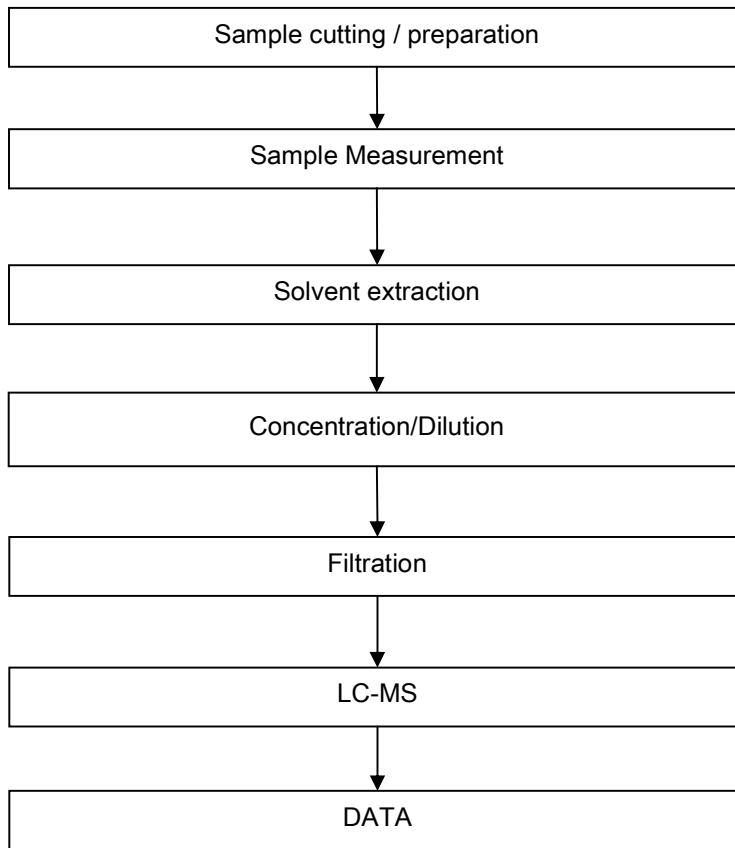
Unless otherwise stated, the results shown in this test report refer only to the sample(s) tested. This document cannot be reproduced except in full, without prior approval of the Company.



ATTACHMENTS

PFOA / PFOS Testing Flow Chart

- 1) Name of the person who made testing: Cindy Huang
- 2) Name of the person in charge of testing: Ryan Yang



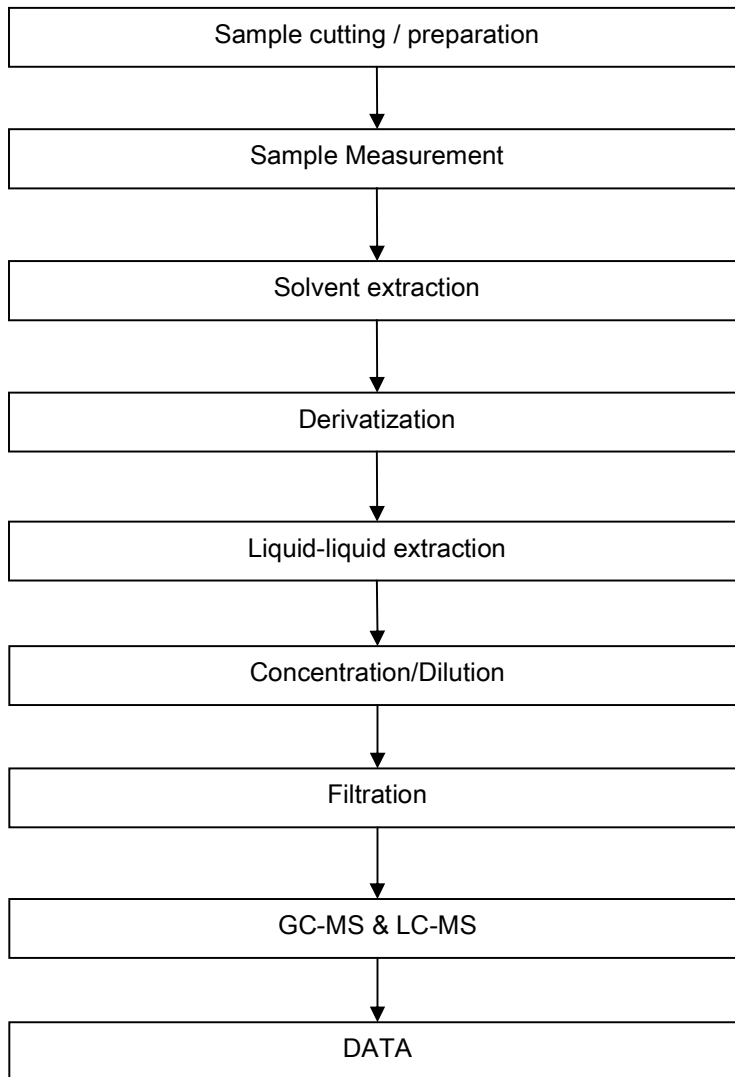
This document is issued by the Company under its General Conditions of Service printed overleaf or available on request and accessible at http://www.sgs.com/terms_and_conditions.htm. Attention is drawn to the limitation of liability, indemnification and jurisdiction issues defined therein. Any holder of this document is advised that information contained hereon reflects the Company's findings at the time of its intervention only and within the limits of Client's instructions, if any. The Company's sole responsibility is to its Client and this document does not generate parties to a transaction from exercising all their rights and obligations under the transaction documents. Any unauthorized alteration, forgery or falsification of the content or appearance of this document is unlawful and offenders may be prosecuted to the fullest extent of the law. Unless otherwise stated, the results shown in this test report refer only to the sample(s) tested. This document cannot be reproduced except in full, without prior approval of the Company.



ATTACHMENTS

TBBP-A Testing Flow Chart

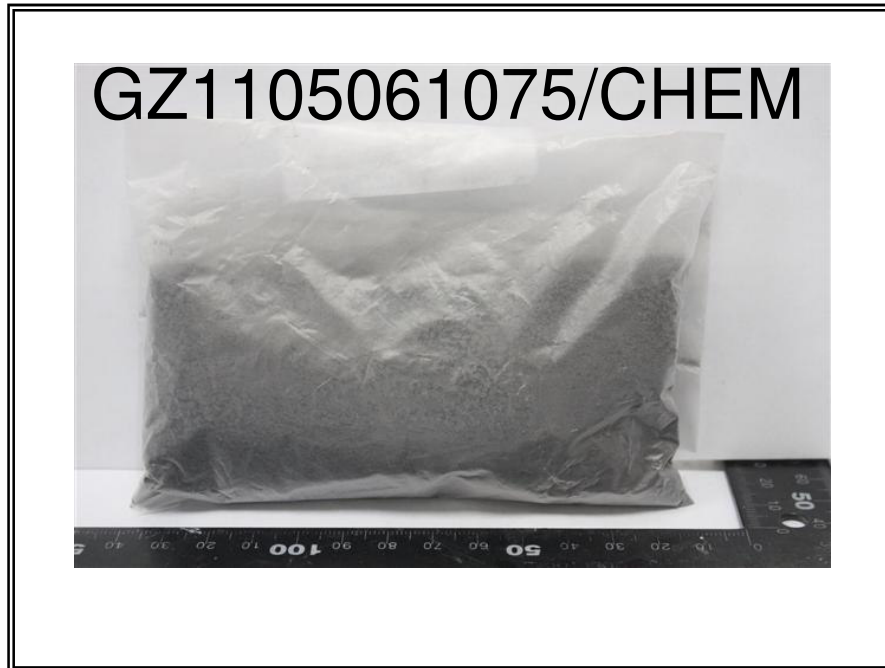
- 1) Name of the person who made testing: Cutey Yu
- 2) Name of the person in charge of testing: Ryan Yang



This document is issued by the Company under its General Conditions of Service printed overleaf or available on request and accessible at http://www.sgs.com/terms_and_conditions.htm. Attention is drawn to the limitation of liability, indemnification and jurisdiction issues defined therein. Any holder of this document is advised that information contained hereon reflects the Company's findings at the time of its intervention only and within the limits of Client's instructions, if any. The Company's sole responsibility is to its Client and this document does not generate parties to a transaction from exercising all their rights and obligations under the transaction documents. Any unauthorized alteration, forgery or falsification of the content or appearance of this document is unlawful and offenders may be prosecuted to the fullest extent of the law.



Sample photo:



SGS authenticate the photo on original report only

*** End of Report ***

This document is issued by the Company under its General Conditions of Service printed overleaf or available on request and accessible at http://www.sgs.com/terms_and_conditions.htm. Attention is drawn to the limitation of liability, indemnification and jurisdiction issues defined therein. Any holder of this document is advised that information contained hereon reflects the Company's findings at the time of its intervention only and within the limits of Client's instructions, if any. The Company's sole responsibility is to its Client and this document does not generate parties to a transaction from exercising all their rights and obligations under the transaction documents. Any unauthorized alteration, forgery or falsification of the content or appearance of this document is unlawful and offenders may be prosecuted to the fullest extent of the law.

